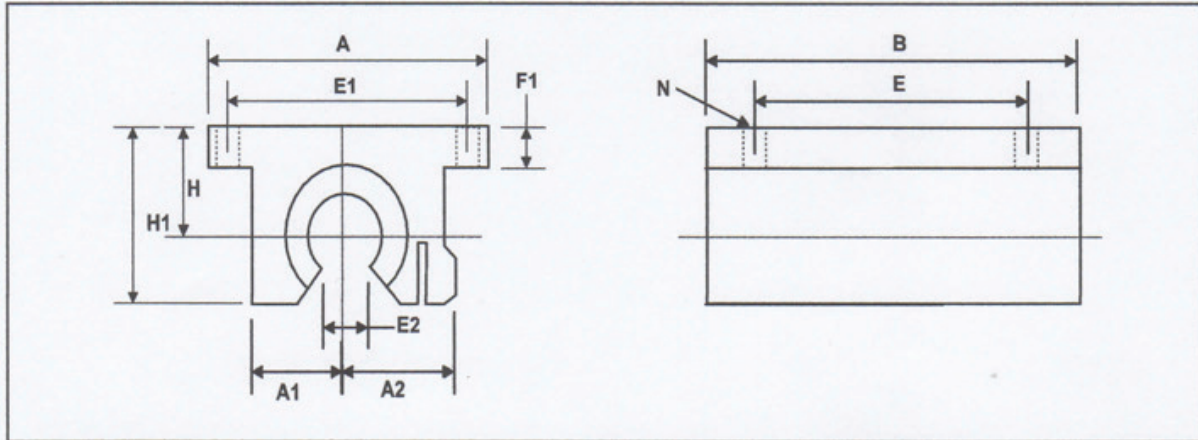


Twin Open Linear Pillow Blocks

Twin Pillow Blocks For Fully Supported Shafts



Part Number	Shaft Dia.	H +/- .003	H1	A	A1	A2	B	E +/- .010	E1 +/- .010	E2	F1	N		Mass (lb)	Load Rating (lbf)
												Hole	Bolt		
TWN8OPN	1/2	.687	1.13	2.00	.69	.75	3.50	2.50	1.688	.31	.25	.16	#6	.4	460
TWN10OPN	5/8	.875	1.44	2.50	.88	.94	4.00	3.00	2.125	.37	.28	.19	#8	.8	640
TWN12OPN	3/4	.937	1.56	2.75	.94	1.00	4.50	3.50	2.375	.43	.31	.19	#8	1.0	940
TWN16OPN	1	1.187	2.00	3.25	1.19	1.25	6.00	4.50	2.875	.56	.38	.22	#10	2.0	1560
TWN20OPN	1-1/4	1.500	2.56	4.00	1.50	1.63	7.50	5.50	3.500	.62	.44	.22	#10	4.2	2340
TWN24OPN	1-1/2	1.750	2.94	4.75	1.75	1.88	9.00	6.50	4.125	.75	.50	.28	1/4	6.7	3120

1. Load ratings are based upon 2 million inches of travel and a shaft hardness of HRC60 or more. The actual load rating is dependant upon the direction of the applied load relative to the bearing's ball track locations. See the polar charts for appropriate derating factors.



LM76 1-800-513-3163 www.LM76.com